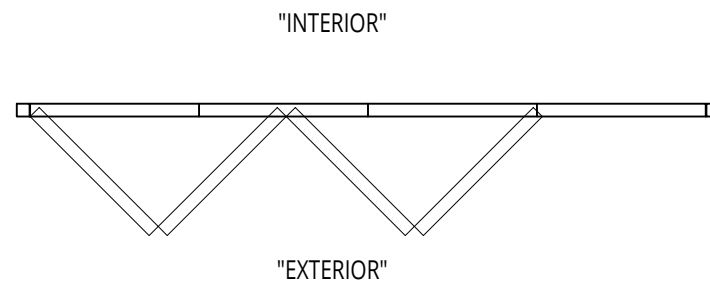


EXTERIOR ELEVATION

NOT TO SCALE

~ SOLAR INNOVATIONS' ALL WALL SYSTEM ~



PLAN VIEW

NOT TO SCALE

UNIT INFORMATION

FRAMING TYPE: G2 Narrow Thermally Broken

GLAZING SET UP: Opening for $\frac{3}{8}$ " Monolithic Glazing to $1\frac{1}{4}$ " Insulated Glazing, Polycarbonate, or Solid Panel Infill

Top or Bottom Weight Bearing

Zero Maintenance Extruded Aluminum Hinges with Stainless Steel Pin

Minimum Horizontal Panel Dimension 18". Smaller Panels may be available upon Engineering Approval

Designed and Manufactured in the U.S.A.

© 2022 Solar Innovations, Inc. - All Rights Reserved. These plans are the property of Solar Innovations, Inc. Any use or reproduction of these plans, in whole or in part, without the written permission of Solar Innovations, Inc. is forbidden.

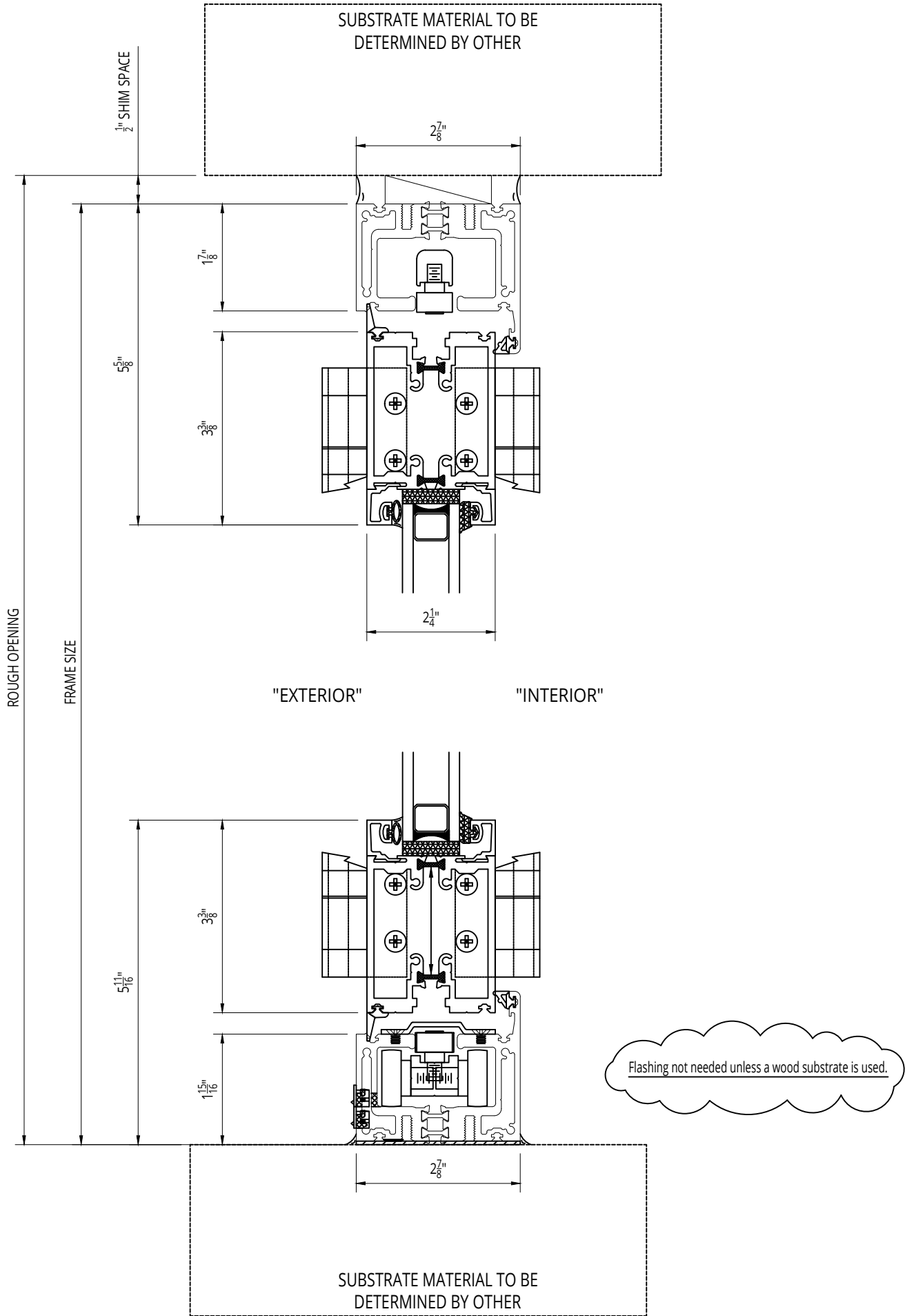


SI3000 G2 Narrow Thermally Broken Folding Glass Wall, Outfold, Top/Bottom Load

ALL DATA CONTAINED HERE IN IS CONSIDERED COMPANY CONFIDENTIAL INFORMATION AND IS SUBJECT TO OUR CONFIDENTIALITY AGREEMENT AS SET FORTH ON OUR WEBSITE AT <http://www.solarinnovations.com/contact/>

ALL DRAWINGS
ARE VIEWED
FROM THE
EXTERIOR
LOOKING IN.

DRAWING
SCALE:
NOT TO SCALE



© 2022 Solar Innovations, Inc. - All Rights Reserved. These plans are the property of Solar Innovations, Inc. Any use or reproduction of these plans, in whole or in part, without the written permission of Solar Innovations, Inc. is forbidden.



SI3000 G2 Thermally Broken Folding Glass Wall, Outfold, Bottom Load, Standard Dual Wheel Sill - Head and Sill Section

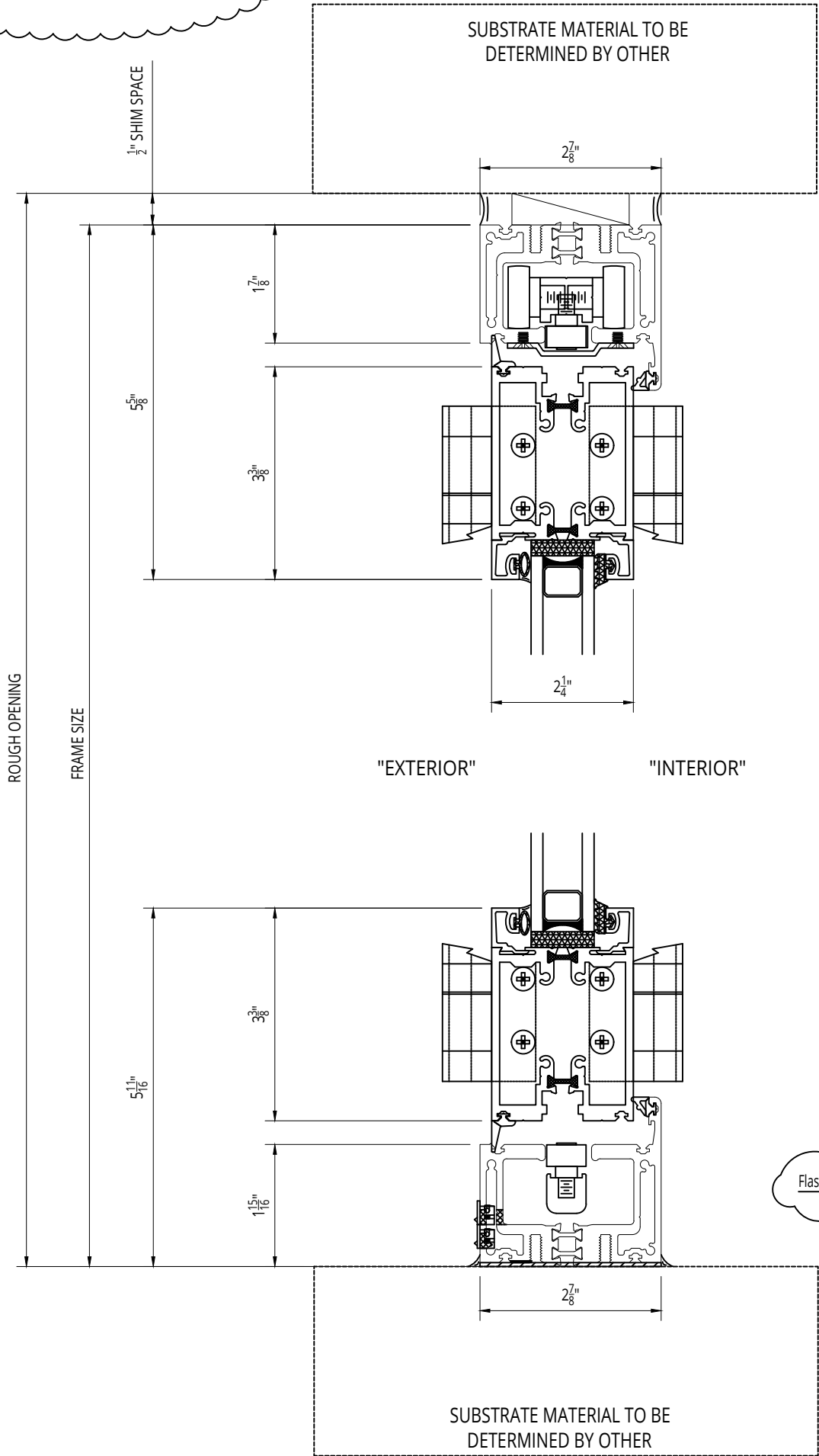
ALL DATA CONTAINED HERE IN IS CONSIDERED COMPANY CONFIDENTIAL INFORMATION AND IS SUBJECT TO OUR CONFIDENTIALITY AGREEMENT AS SET FORTH ON OUR WEBSITE AT <http://www.solarinnovations.com/contact/>

ALL DRAWINGS
ARE VIEWED
FROM THE
EXTERIOR
LOOKING IN.

DRAWING
SCALE:
NOT TO
SCALE

© 2023 Solar Innovations® Architectural Glazing Systems - All Rights Reserved. These plans are the property of Solar Innovations® Architectural Glazing Systems. Any use or reproduction of these plans, in whole or in part, without the written permission of Solar Innovations® Architectural Glazing Systems is forbidden.

STRUCTURAL HEADER NOTE:
STRUCTURAL HEADER [NOT BY SOLAR INNOVATIONS]
REQUIRED TO SUPPORT WEIGHT OF FOLDING GLASS WALL.
HEAD DETAIL SHOWN FOR CONCEPTUAL USE ONLY. DESIGN OF
HEADER IS NOT THE RESPONSIBILITY OF SOLAR INNOVATIONS.



© 2022 Solar Innovations, Inc. - All Rights Reserved. These plans are the property of Solar Innovations, Inc. Any use or reproduction of these plans, in whole or in part, without the written permission of Solar Innovations, Inc. is forbidden.



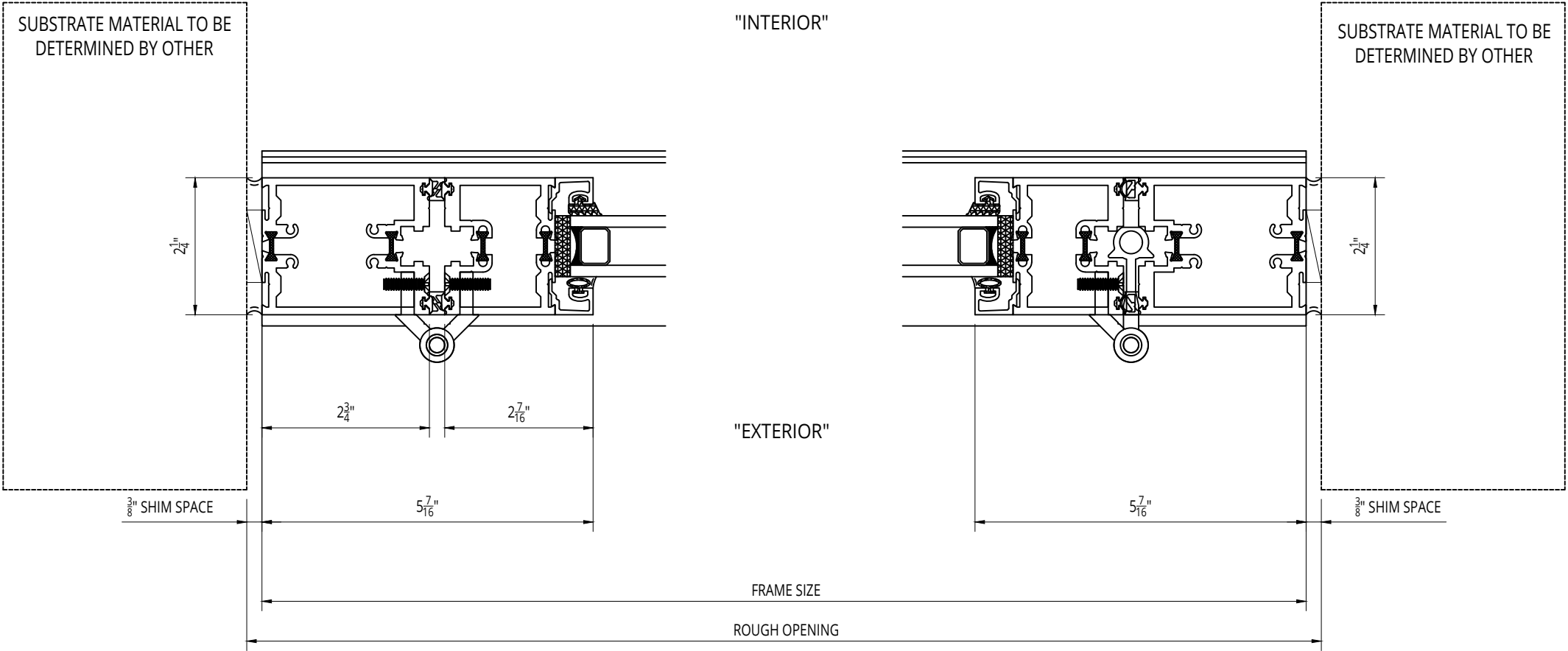
SOLAR INNOVATIONS®
WINDOWS & DOORS

SI3000 G2 Thermally Broken Folding Glass Wall, Outfold, Top
Load, Standard Dual Wheel Sill - Head and Sill Section

ALL DATA CONTAINED HERE IN IS CONSIDERED COMPANY CONFIDENTIAL INFORMATION AND IS SUBJECT TO OUR CONFIDENTIALITY AGREEMENT AS SET FORTH ON OUR WEBSITE AT <http://www.solarinnovations.com/contact/>

ALL DRAWINGS
ARE VIEWED
FROM THE
EXTERIOR
LOOKING IN.

DRAWING
SCALE:
NOT TO
SCALE



© 2022 Solar Innovations, Inc. - All Rights Reserved. These plans are the property of Solar Innovations, Inc. Any use or reproduction of these plans, in whole or in part, without the written permission of Solar Innovations, Inc. is forbidden.



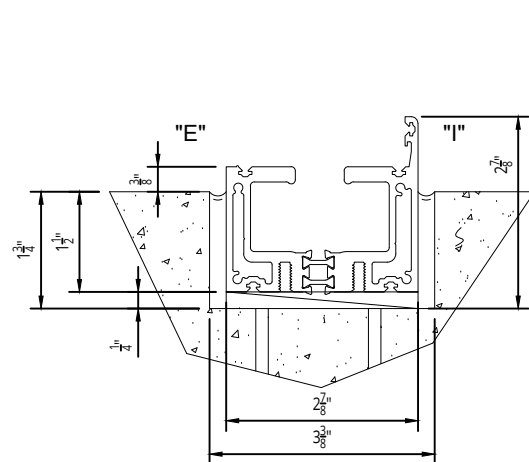
SI3000 G2 Thermally Broken Folding Glass Wall, Outfold, Top/Bottom Load - Jamb Details

ALL DATA CONTAINED HERE IN IS CONSIDERED COMPANY CONFIDENTIAL INFORMATION AND IS SUBJECT TO OUR CONFIDENTIALITY AGREEMENT AS SET FORTH ON OUR WEBSITE AT <http://www.solarinnovations.com/contact/>

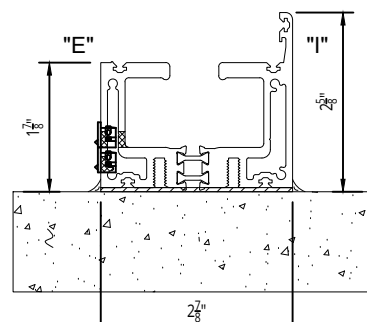
ALL DRAWINGS
ARE VIEWED
FROM THE
EXTERIOR
LOOKING IN.

DRAWING
SCALE:
NOT TO SCALE

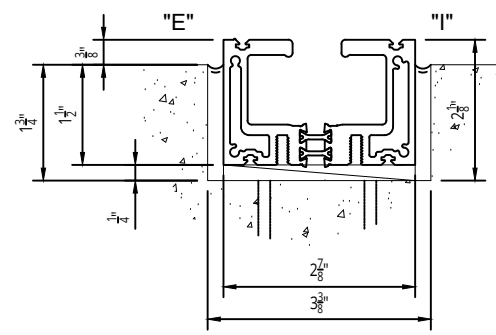
SI3000 G2 OUTFOLD FOLDING GLASS WALL SILLS



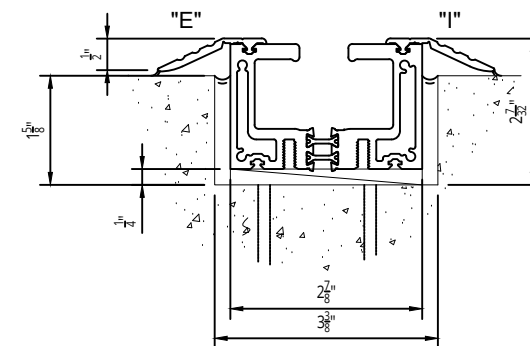
RECESSED STANDARD SILL
12.0 PSF NO LEAKAGE
HURRICANE CERTIFIED
NOT ADA
MUST CHOOSE PAINT COLOR



STANDARD SILL
12.0 PSF NO LEAKAGE
HURRICANE CERTIFIED
NOT ADA
MUST CHOOSE PAINT COLOR



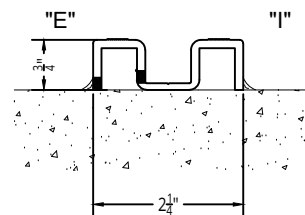
RECESSED FLUSH SILL
9.0 PSF NO LEAKAGE
HURRICANE CERTIFIED
MEETS ADA WITH SILL FILL
CLR OR DK BRZ ANODIZED



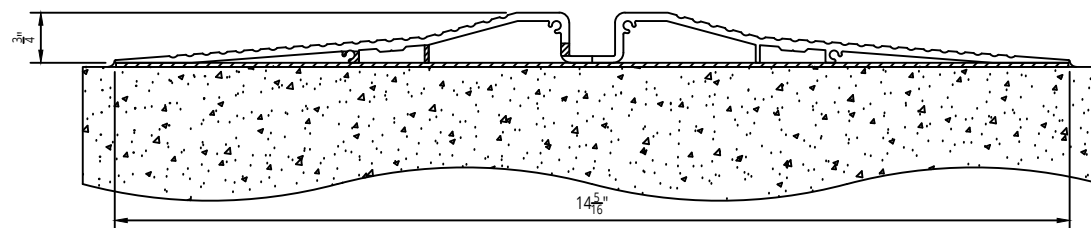
RECESSED RAMP SILL
LIMITED AIR AND WATER RESISTANCE
SIMILAR TO COMMERCIAL DOOR
MEETS ADA WITH SILL FILL
CLR OR DK BRZ ANODIZED

TOP LOAD ONLY (REQUIRES STRUCTURAL HEADER BY OTHERS)

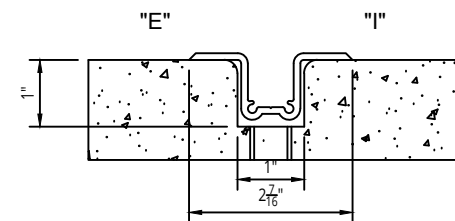
NO TRANSOM BY S.I.



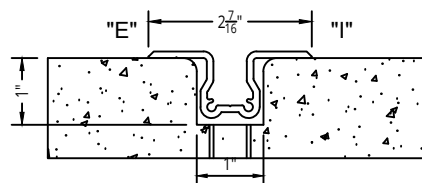
SURFACE MOUNTED SILL (TOP LOAD ONLY)
LIMITED AIR AND WATER RESISTANCE
SIMILAR TO COMMERCIAL DOOR
NOT HURRICANE CERTIFIED
DOES NOT MEET ADA
MUST CHOOSE PAINT COLOR



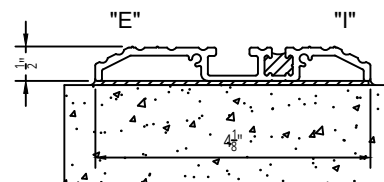
SURFACE MOUNTED ADA SILL (TOP LOAD ONLY)
LIMITED AIR AND WATER RESISTANCE
SIMILAR TO COMMERCIAL DOOR
MEETS ADA
NOT HURRICANE CERTIFIED
CLR OR DK BRZ ANODIZED



RECESSED FLUSH HAT SILL (TOP LOAD ONLY)
LIMITED AIR AND WATER RESISTANCE
NOT HURRICANE CERTIFIED
MEETS ADA WITH SILL FILL
CLR OR DK BRZ ANODIZED

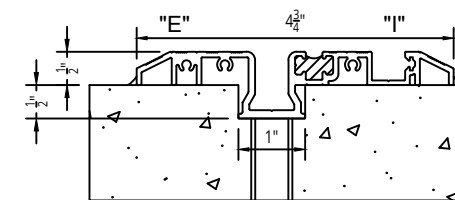


ADA RECESSED FLUSH HAT SILL (TOP LOAD ONLY)
LIMITED AIR AND WATER RESISTANCE
MEETS ADA
NOT HURRICANE CERTIFIED
MUST CHOOSE PAINT COLOR



THERMAL ADA SILL (TOP LOAD ONLY)
LIMITED AIR AND WATER RESISTANCE
SIMILAR TO COMMERCIAL DOOR (FOR DOORS UP TO 8' TALL)
MEETS ADA
NOT HURRICANE CERTIFIED
MUST CHOOSE PAINT COLOR

PLEASE NOTE: All recessed sills require a drain pipe to be located at two points under the sill.
Locations to be determined and shown on shop drawings.



RECESSED THERMAL ADA SILL (TOP LOAD ONLY)
LIMITED AIR AND WATER RESISTANCE
SIMILAR TO COMMERCIAL DOOR (FOR DOORS UP TO 10' TALL)
MEETS ADA
NOT HURRICANE CERTIFIED
MUST CHOOSE PAINT COLOR

© 2022 Solar Innovations, Inc. - All Rights Reserved. These plans are the property of Solar Innovations, Inc. Any use or reproduction of these plans, in whole or in part, without the written permission of Solar Innovations, Inc. is forbidden.



SI3000 G2 Thermally Broken Folding Glass Wall, Outfold - Sill Options

ALL DATA CONTAINED HERE IN IS CONSIDERED COMPANY CONFIDENTIAL INFORMATION AND IS SUBJECT TO OUR CONFIDENTIALITY AGREEMENT AS SET FORTH ON OUR WEBSITE AT <http://www.solarinnovations.com/contact/>

ALL DRAWINGS
ARE VIEWED
FROM THE
EXTERIOR
LOOKING IN.

DRAWING
SCALE:
NOT TO SCALE