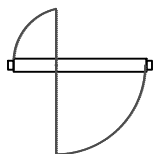


EXTERIOR ELEVATION

NOT TO SCALE

~ SOLAR INNOVATIONS' PIVOT DOOR SYSTEM ~

"INTERIOR"



"EXTERIOR"

PLAN VIEW

NOT TO SCALE

UNIT INFORMATION

FRAMING TYPE: G2 Offset Pivot Door with Insulbar Thermal Break

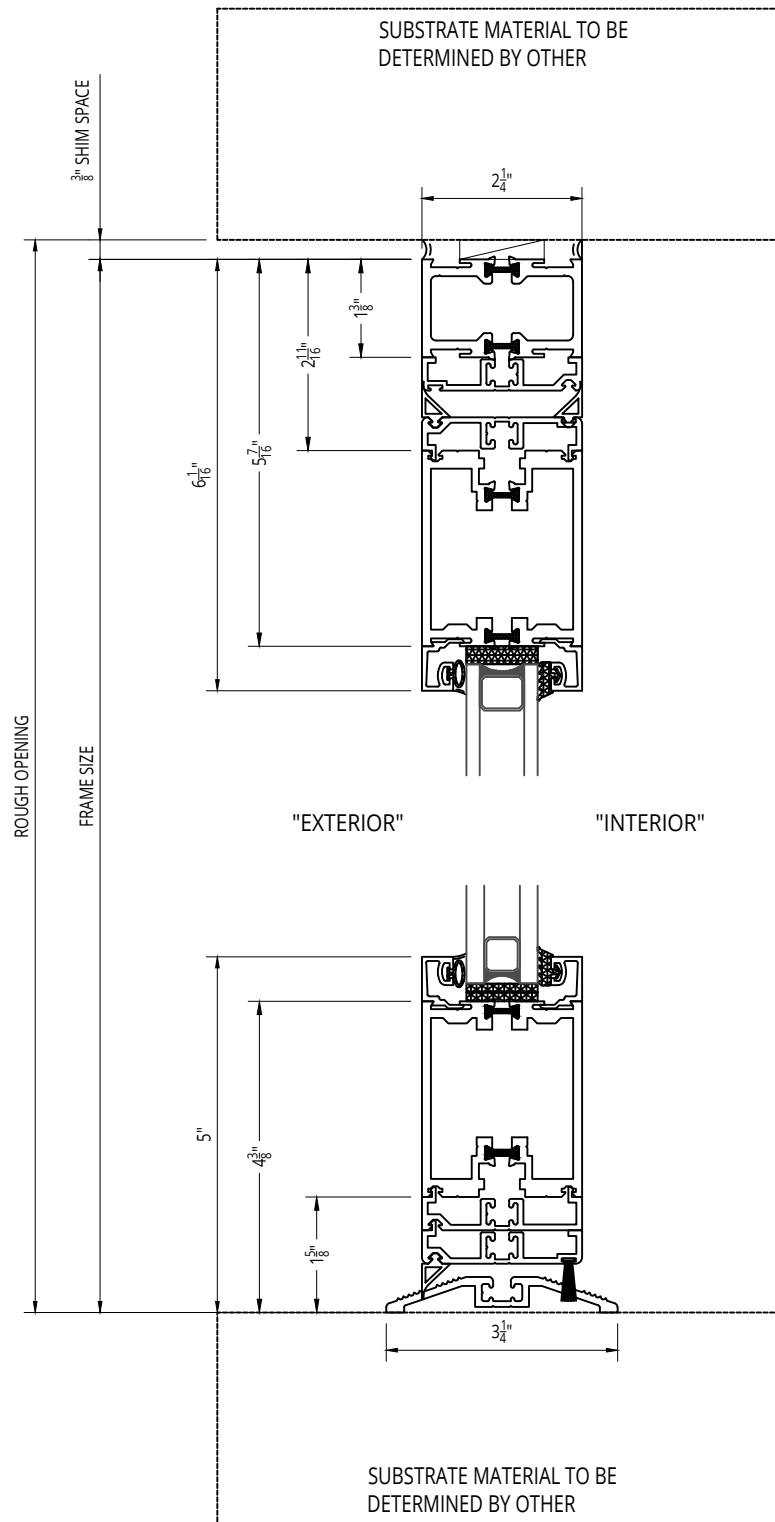
GLAZING SET UP: Opening for $\frac{3}{16}$ " Monolithic Glazing to 1" Insulated Glazing, Polycarbonate, or Solid Panel Infill

Decorative interior and exterior low profile grid option.

Minimum Horizontal Panel Dimension 18". Smaller Panels may be available upon Engineering Approval

Designed and Manufactured in the U.S.A.

© 2017 Solar Innovations, Inc. - All Rights Reserved. These plans are the property of Solar Innovations, Inc. Any use or reproduction of these plans, in whole or in part, without the written permission of Solar Innovations, Inc. is forbidden.



© 2017 Solar Innovations, Inc. - All Rights Reserved. These plans are the property of Solar Innovations, Inc. Any use or reproduction of these plans, in whole or in part, without the written permission of Solar Innovations, Inc. is forbidden.



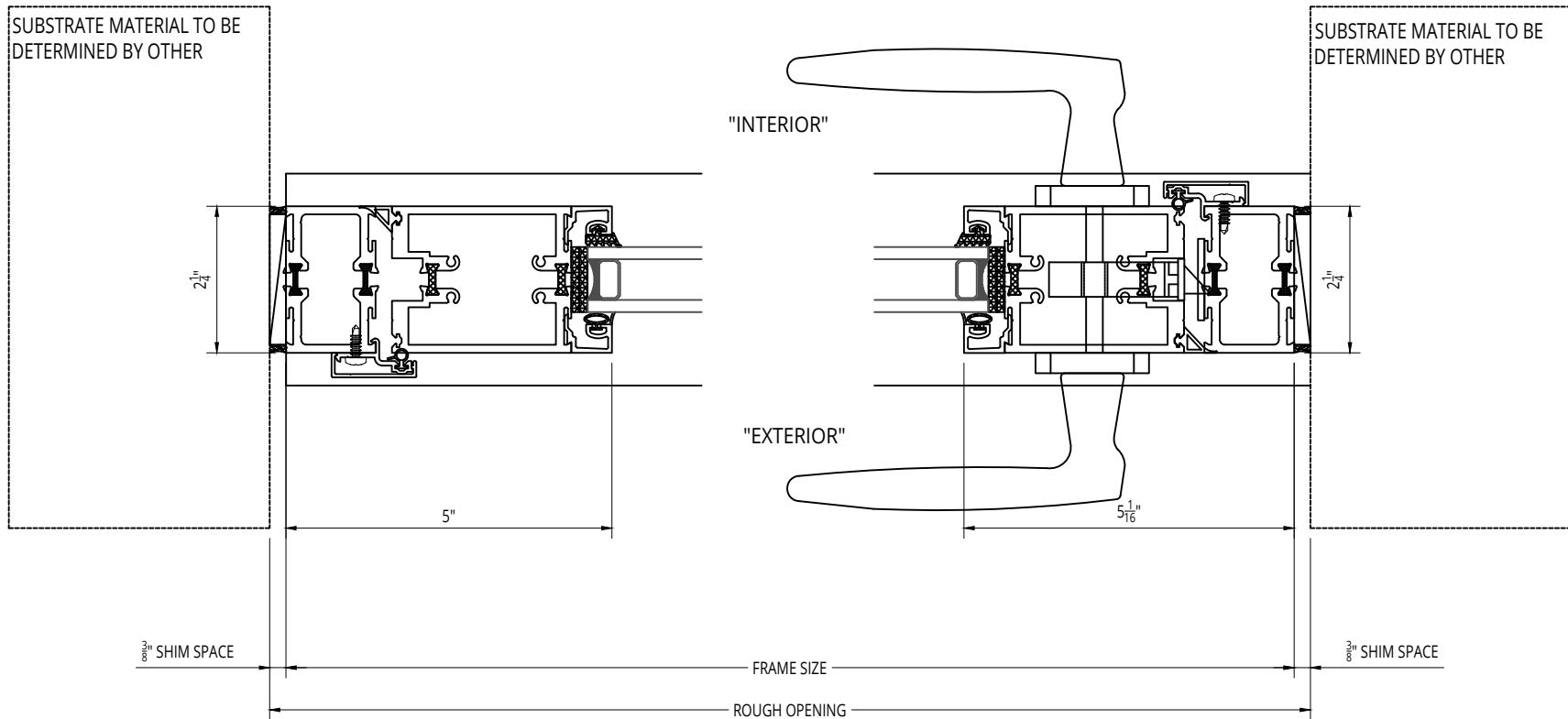
SOLAR INNOVATIONS®
WINDOWS & DOORS

**SI3000P G2 Offset Pivot Door, Outswing - Head and Sill
Details**

ALL DATA CONTAINED HEREIN IS CONSIDERED COMPANY CONFIDENTIAL INFORMATION AND IS SUBJECT TO OUR CONFIDENTIALITY AGREEMENT AS SET FORTH ON OUR WEBSITE AT <http://www.solarinnovations.com/contact/>

ALL DRAWINGS
ARE VIEWED
FROM THE
EXTERIOR
LOOKING IN.

DRAWING
SCALE:
NOT TO SCALE



© 2017 Solar Innovations, Inc. - All Rights Reserved. These plans are the property of Solar Innovations, Inc. Any use or reproduction of these plans, in whole or in part, without the written permission of Solar Innovations, Inc. is forbidden.