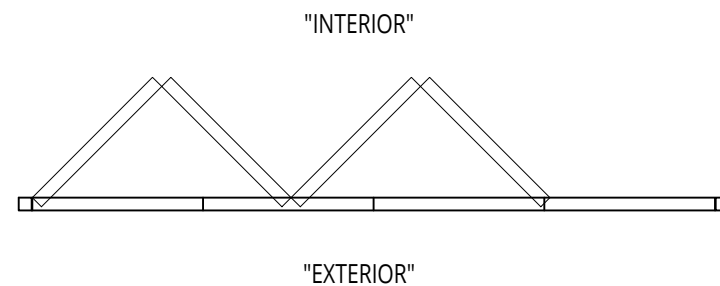


EXTERIOR ELEVATION

NOT TO SCALE

~ SOLAR INNOVATIONS' ALL WALL SYSTEM ~



PLAN VIEW

NOT TO SCALE

UNIT INFORMATION

FRAMING TYPE: G2 Standard Framing with Iso-bar thermal break

GLAZING SET UP: Opening for $\frac{3}{16}$ " Monolithic Glazing to $1\frac{1}{4}$ " Insulated Glazing, Polycarbonate, or Solid Panel Infill

Top or Bottom Weight Bearing

Zero Maintenance Extruded Aluminum Hinges with Stainless Steel Pin

Minimum Horizontal Panel Dimension 18". Smaller Panels may be available upon Engineering Approval

Designed and Manufactured in the U.S.A.

© 2022 Solar Innovations, Inc. - All Rights Reserved. These plans are the property of Solar Innovations, Inc. Any use or reproduction of these plans, in whole or in part, without the written permission of Solar Innovations, Inc. is forbidden.

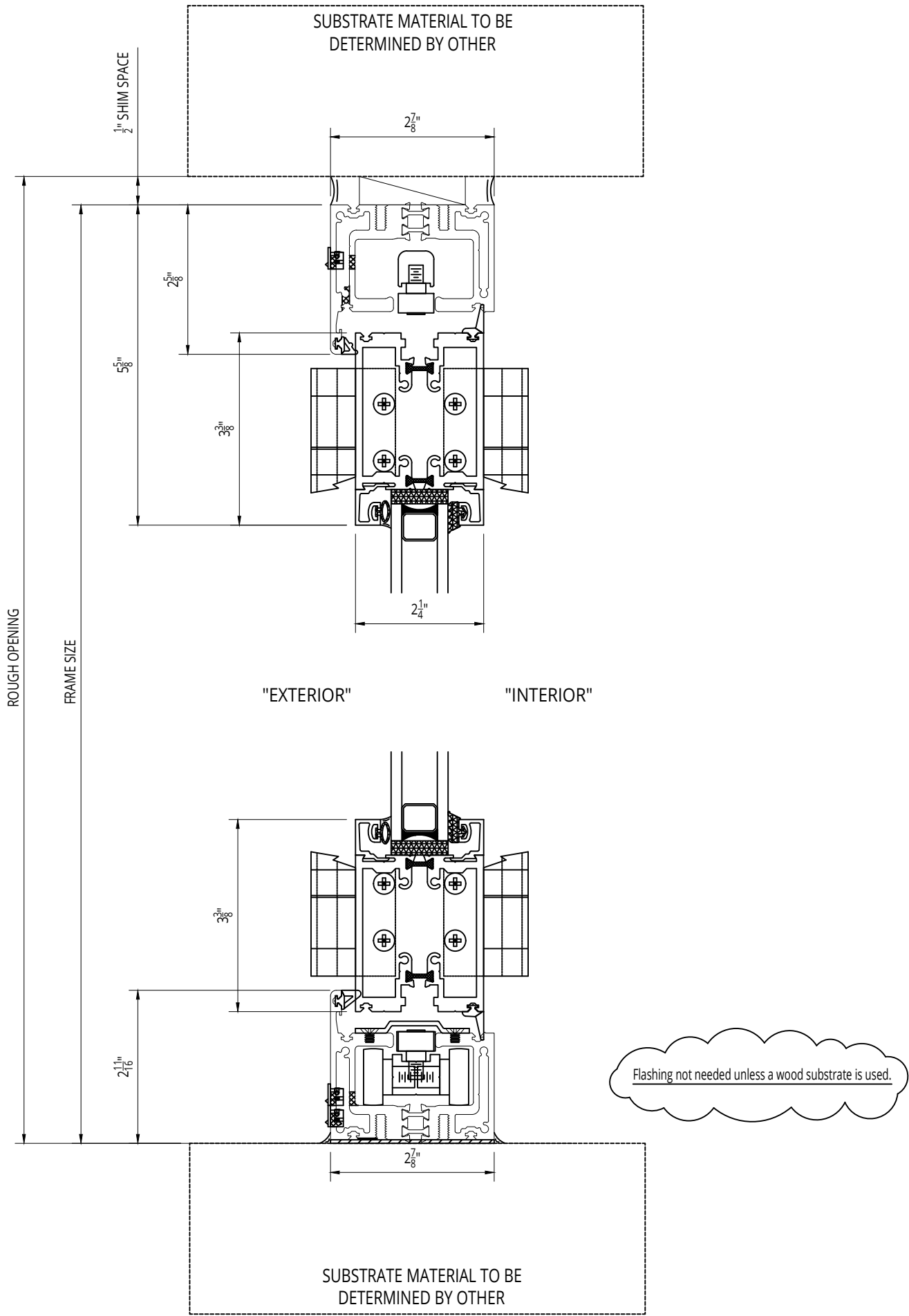


SI3000 G2 Thermally Broken Folding Glass Wall, Infold, Top/Bottom Load

ALL DATA CONTAINED HERE IN IS CONSIDERED COMPANY CONFIDENTIAL INFORMATION AND IS SUBJECT TO OUR CONFIDENTIALITY AGREEMENT AS SET FORTH ON OUR WEBSITE AT <http://www.solarinnovations.com/contact/>

ALL DRAWINGS
ARE VIEWED
FROM THE
EXTERIOR
LOOKING IN.

DRAWING
SCALE:
NOT TO SCALE



© 2022 Solar Innovations, Inc. - All Rights Reserved. These plans are the property of Solar Innovations, Inc. Any use or reproduction of these plans, in whole or in part, without the written permission of Solar Innovations, Inc. is forbidden.



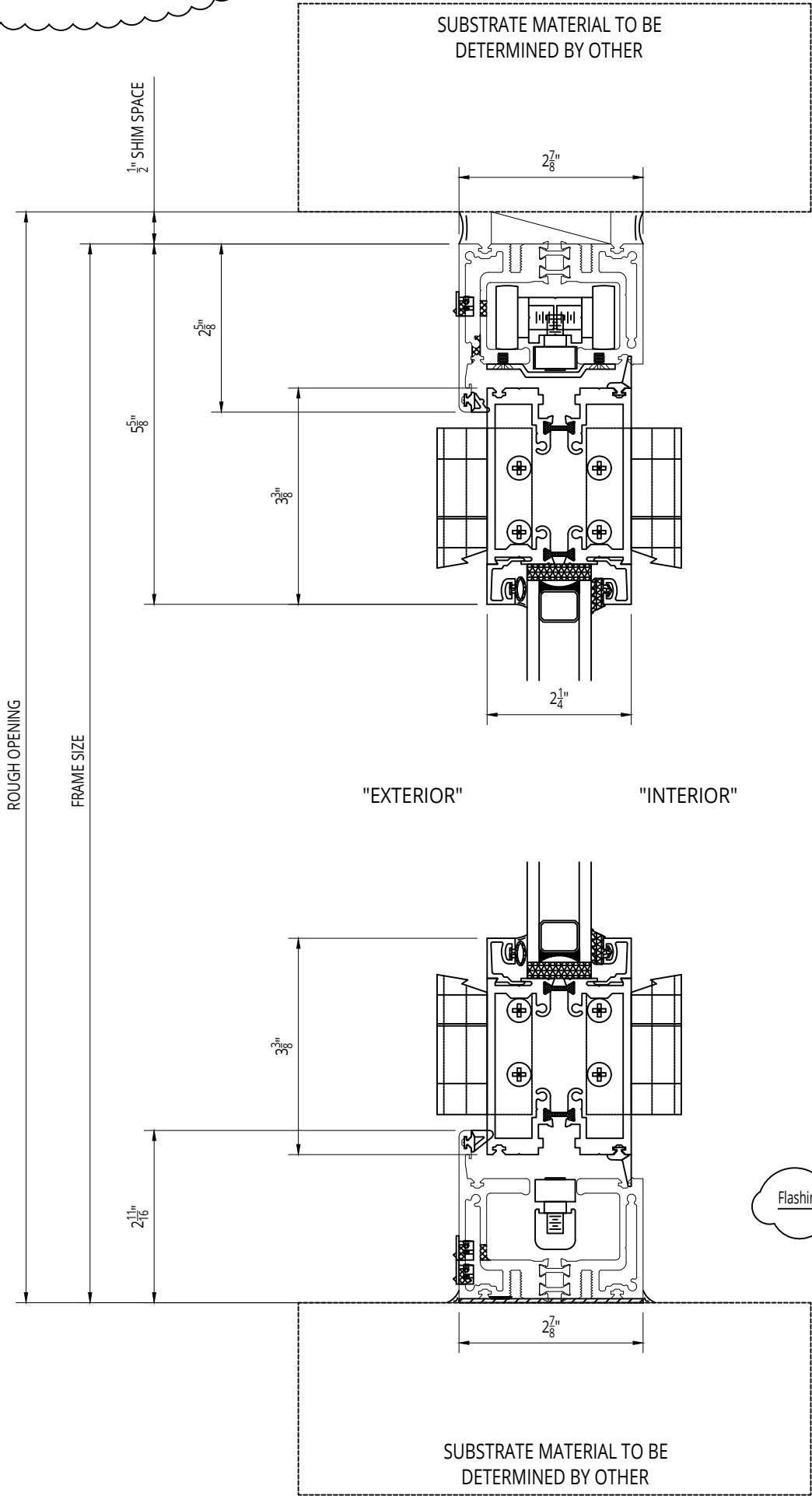
SI3000 G2 Thermally Broken Folding Glass Wall, Infold, Bottom Load, Standard Dual Wheel Sill - Head and Sill Section

ALL DATA CONTAINED HERE IN IS CONSIDERED COMPANY CONFIDENTIAL INFORMATION AND IS SUBJECT TO OUR CONFIDENTIALITY AGREEMENT AS SET FORTH ON OUR WEBSITE AT <http://www.solarinnovations.com/contact/>

ALL DRAWINGS
ARE VIEWED
FROM THE
EXTERIOR
LOOKING IN.

DRAWING
SCALE:
NOT TO SCALE

STRUCTURAL HEADER NOTE:
STRUCTURAL HEADER [NOT BY SOLAR INNOVATIONS]
REQUIRED TO SUPPORT WEIGHT OF FOLDING GLASS WALL.
HEAD DETAIL SHOWN FOR CONCEPTUAL USE ONLY. DESIGN OF
HEADER IS NOT THE RESPONSIBILITY OF SOLAR INNOVATIONS.



© 2022 Solar Innovations, Inc. - All Rights Reserved. These plans are the property of Solar Innovations, Inc. Any use or reproduction of these plans, in whole or in part, without the written permission of Solar Innovations, Inc. is forbidden.



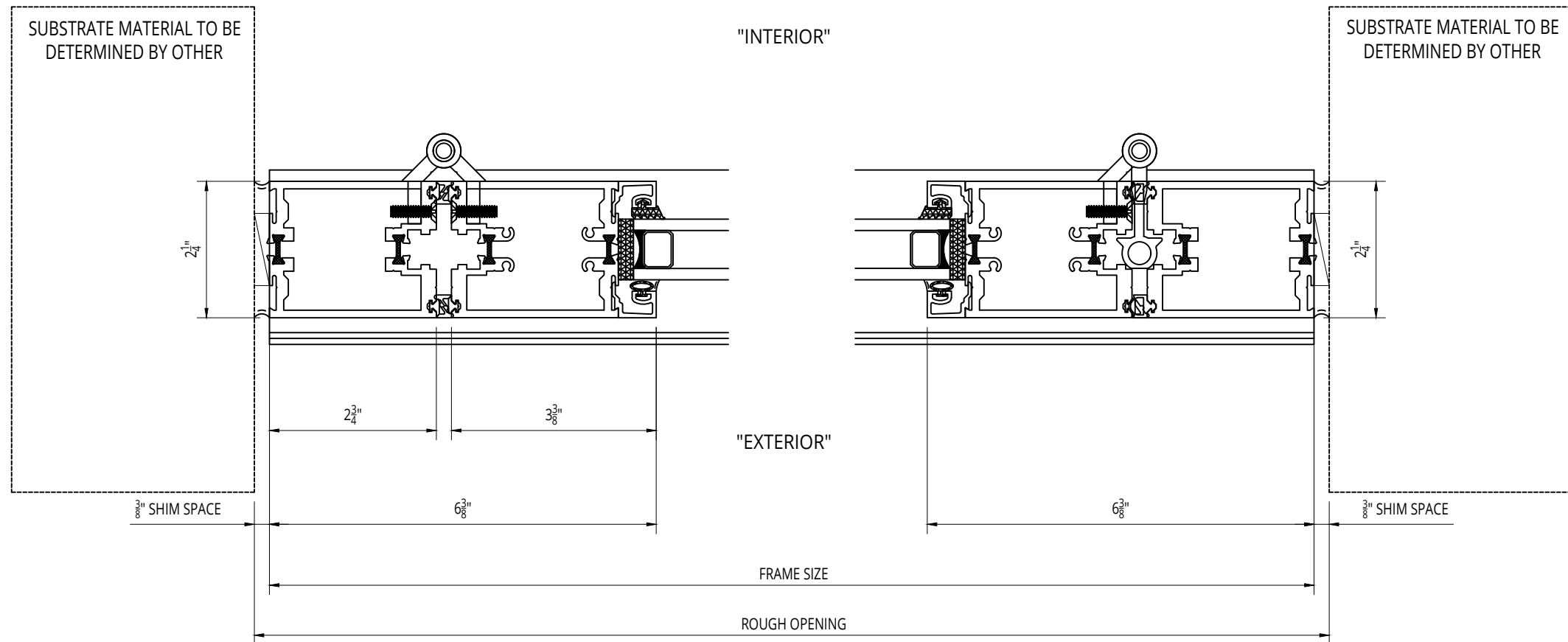
SOLAR INNOVATIONS®
WINDOWS & DOORS

SI3000 G2 Thermally Broken Folding Glass Wall, Infold, Top
Load, Standard Dual Wheel Sill - Head and Sill Section

ALL DATA CONTAINED HERE IN IS CONSIDERED COMPANY CONFIDENTIAL INFORMATION AND IS SUBJECT TO OUR CONFIDENTIALITY AGREEMENT AS SET FORTH ON OUR WEBSITE AT <http://www.solarinnovations.com/contact/>

ALL DRAWINGS
ARE VIEWED
FROM THE
EXTERIOR
LOOKING IN.

DRAWING
SCALE:
NOT TO SCALE



© 2022 Solar Innovations, Inc. - All Rights Reserved. These plans are the property of Solar Innovations, Inc. Any use or reproduction of these plans, in whole or in part, without the written permission of Solar Innovations, Inc. is forbidden.



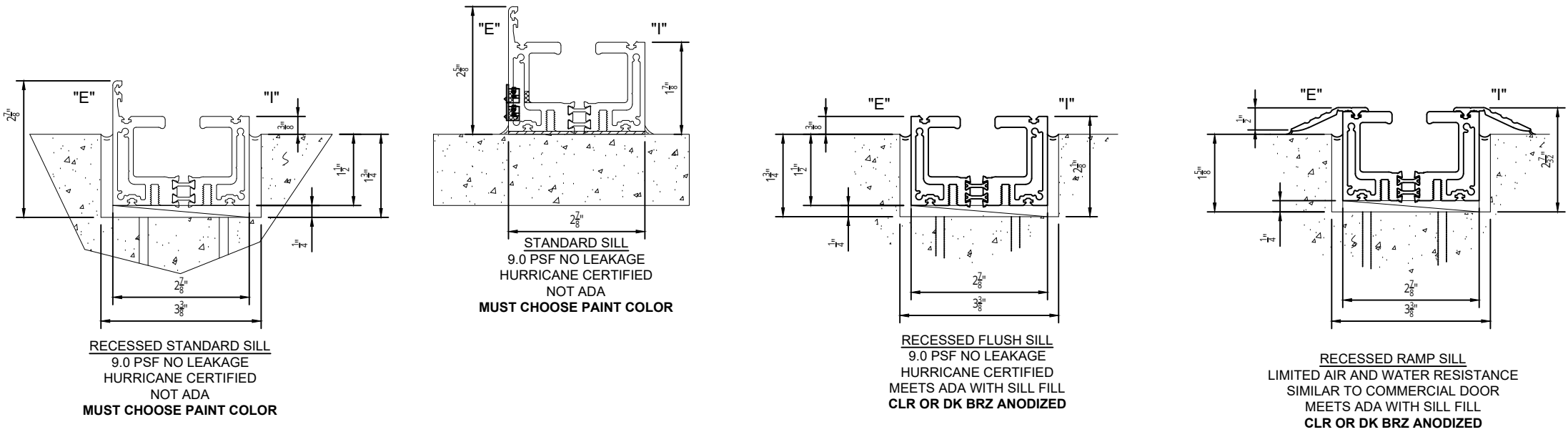
SI3000 G2 Thermally Broken Folding Glass Wall, Infold, Top/Bottom Load - Jamb Details

ALL DATA CONTAINED HERE IN IS CONSIDERED COMPANY CONFIDENTIAL INFORMATION AND IS SUBJECT TO OUR CONFIDENTIALITY AGREEMENT AS SET FORTH ON OUR WEBSITE AT <http://www.solarinnovations.com/contact/>

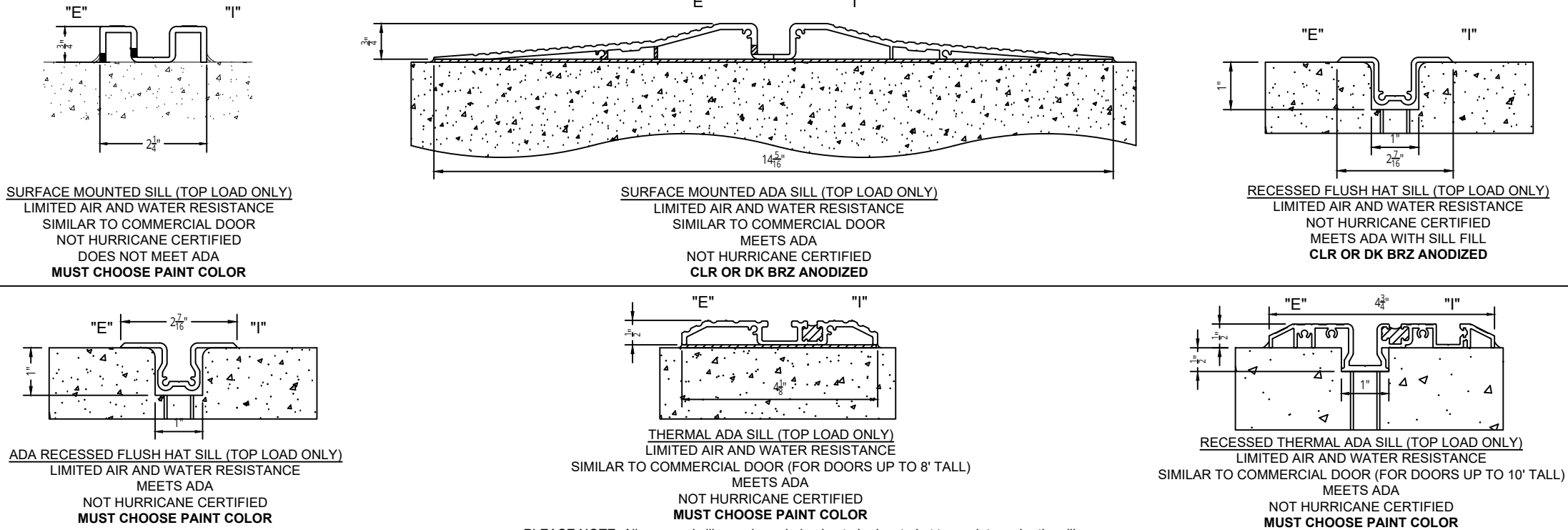
ALL DRAWINGS
ARE VIEWED
FROM THE
EXTERIOR
LOOKING IN.

DRAWING
SCALE:
NOT TO SCALE

SI3000 G2 INFOLD FOLDING GLASS WALL SILLS



TOP LOAD ONLY (REQUIRES STRUCTURAL HEADER BY OTHERS) NO TRANSOM BY S.I.



PLEASE NOTE: All recessed sills require a drain pipe to be located at two points under the sill.
Locations to be determined and show on shop drawings.

© 2022 Solar Innovations, Inc. - All Rights Reserved. These plans are the property of Solar Innovations, Inc. Any use or reproduction of these plans, in whole or in part, without the written permission of Solar Innovations, Inc. is forbidden.



SOLAR INNOVATIONS®
WINDOWS & DOORS

SI3000 G2 Thermally Broken Folding Glass Wall, Infold - Sill Options

ALL DATA CONTAINED HERE IN IS CONSIDERED COMPANY CONFIDENTIAL INFORMATION AND IS SUBJECT TO OUR CONFIDENTIALITY AGREEMENT AS SET FORTH ON OUR WEBSITE AT <http://www.solarinnovations.com/contact/>

ALL DRAWINGS
ARE VIEWED
FROM THE
EXTERIOR
LOOKING IN.

DRAWING
SCALE:
NOT TO SCALE