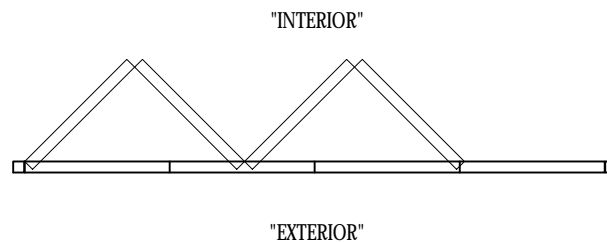


## EXTERIOR ELEVATION

NOT TO SCALE

~ SOLAR INNOVATIONS' ALL WALL SYSTEM ~



## PLAN VIEW

NOT TO SCALE

### UNIT INFORMATION

FRAMING TYPE: G2 True Wood Folding Glass Wall

GLAZING SET UP: Opening for  $\frac{3}{16}$ " Monolithic Glazing to  $1\frac{1}{4}$ " Insulated Glazing, Polycarbonate, or Solid Panel Infill

Top or Bottom Weight Bearing

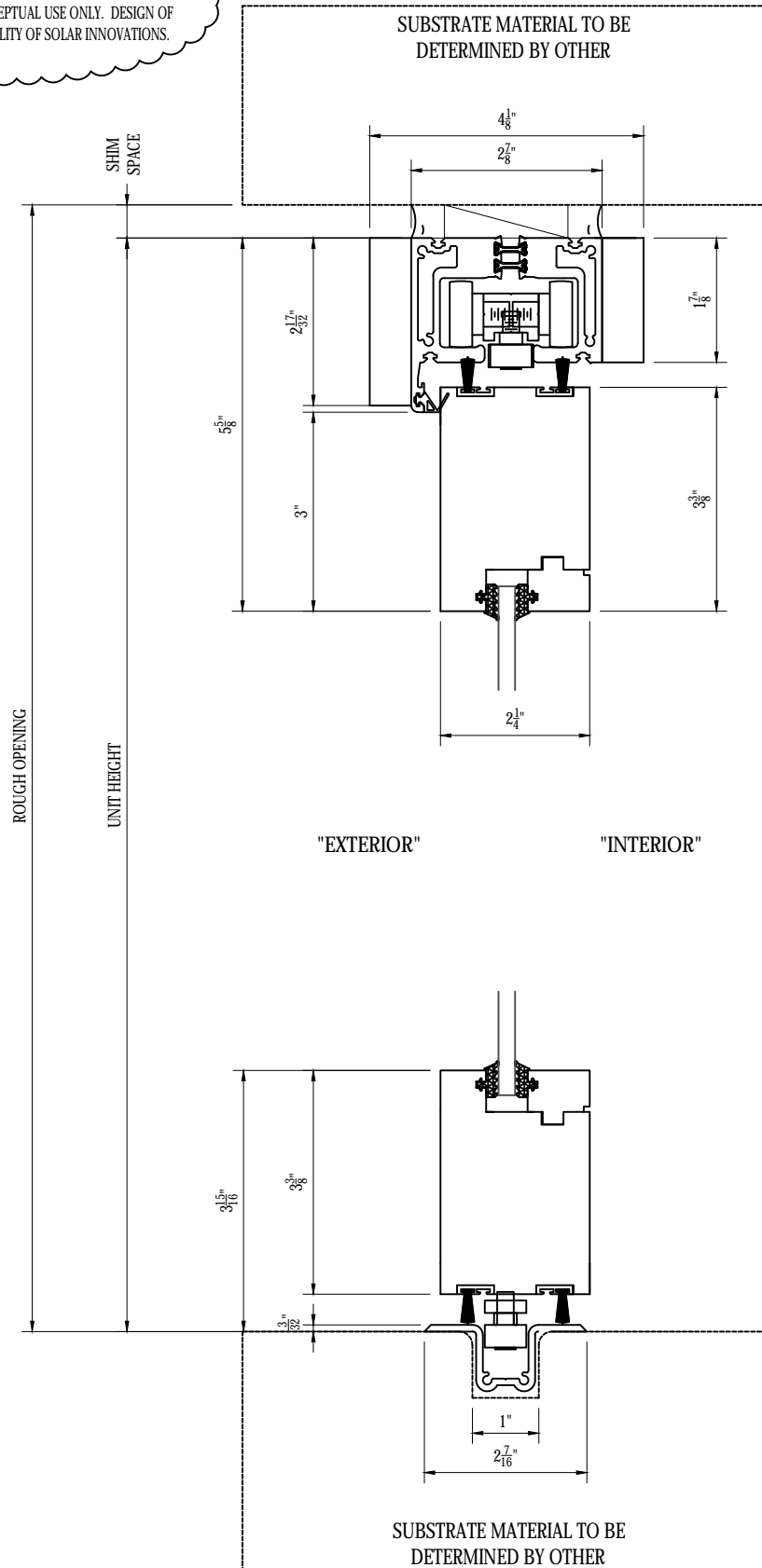
Zero Maintenance Extruded Aluminum Hinges with Stainless Steel Pin

Minimum Horizontal Panel Dimension 18". Smaller Panels may be available upon Engineering Approval

Designed and Manufactured in the U.S.A.

© 2017 Solar Innovations, Inc. - All Rights Reserved. These plans are the property of Solar Innovations, Inc. Any use or reproduction of these plans, in whole or in part, without the written permission of Solar Innovations, Inc. is forbidden.

STRUCTURAL HEADER NOTE:  
 STRUCTURAL HEADER [ NOT BY SOLAR INNOVATIONS ]  
 REQUIRED TO SUPPORT WEIGHT OF FOLDING GLASS WALL.  
 HEAD DETAIL SHOWN FOR CONCEPTUAL USE ONLY. DESIGN OF  
 HEADER IS NOT THE RESPONSIBILITY OF SOLAR INNOVATIONS.



© 2017 Solar Innovations, Inc. - All Rights Reserved. These plans are the property of Solar Innovations, Inc. Any use or reproduction of these plans, in whole or in part, without the written permission of Solar Innovations, Inc. is forbidden.



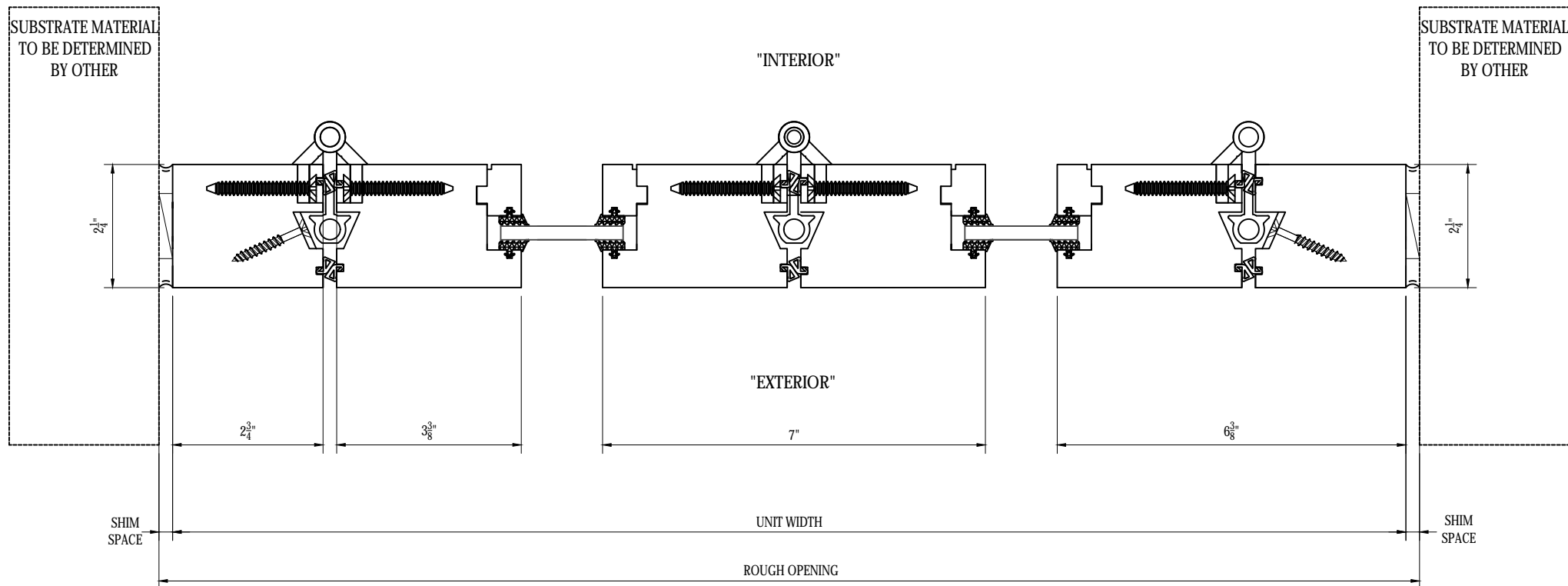
**SOLAR INNOVATIONS®**  
 WINDOWS & DOORS

SI3000W G2 True Wood Folding Glass Wall, Infold, Top Load,  
 Recessed Flush Hat Sill - Head and Sill Section

ALL DATA CONTAINED HEREIN IS CONSIDERED COMPANY CONFIDENTIAL INFORMATION AND IS SUBJECT TO OUR CONFIDENTIALITY AGREEMENT AS SET FORTH ON OUR WEBSITE AT <http://www.solarinnovations.com/contact/>

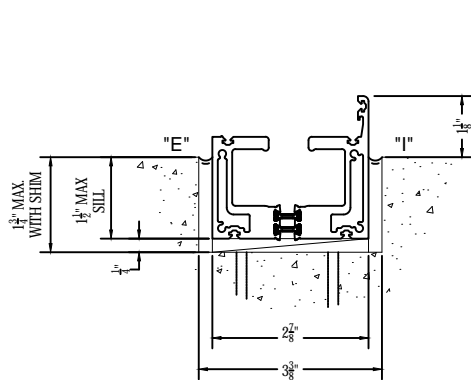
ALL DRAWINGS  
 ARE VIEWED  
 FROM THE  
 EXTERIOR  
 LOOKING IN.

DRAWING  
 SCALE:  
 NOT TO  
 SCALE

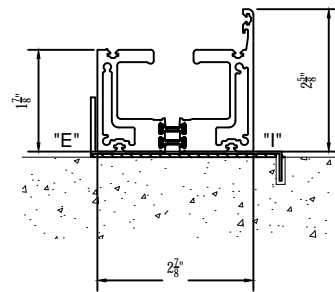


© 2017 Solar Innovations, Inc. - All Rights Reserved. These plans are the property of Solar Innovations, Inc. Any use or reproduction of these plans, in whole or in part, without the written permission of Solar Innovations, Inc. is forbidden.

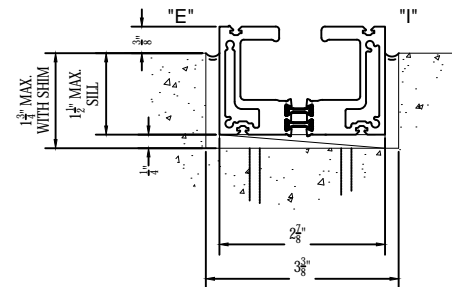
# SI3000W G2 TRUE WOOD FOLDING GLASS WALL SILLS



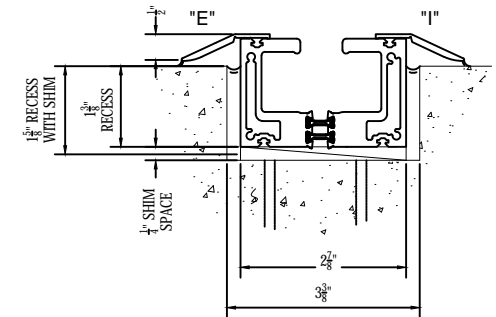
**RECESSED STANDARD SILL**  
12.0 PSF NO LEAKAGE  
HURRICANE CERTIFIED  
NOT ADA  
**MUST CHOOSE PAINT COLOR**



**STANDARD SILL**  
12.0 PSF NO LEAKAGE  
HURRICANE CERTIFIED  
NOT ADA  
**MUST CHOOSE PAINT COLOR**

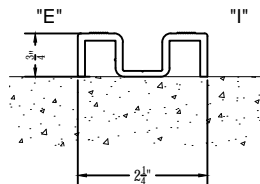


**RECESSED FLUSH SILL**  
LIMITED AIR & WATER PERFORMANCE  
SIMILAR TO COMMERCIAL DOOR OR BETTER  
BECAUSE OF TANK  
HURRICANE CERTIFIED AT 9.0PSF NO LEAKAGE  
**CLR OR DK BRZ ANODIZED**

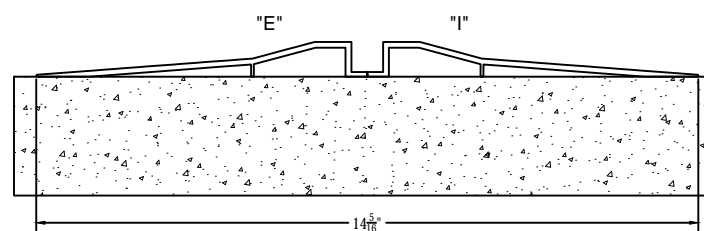


**RECESSED SILL w/ DOUBLE ADJUSTABLE RAMP STOP**  
LIMITED WATER RESISTANCE SIMILAR  
TO COMMERCIAL DOOR  
HURRICANE CERTIFIED AT 9.0PSF NO LEAKAGE  
MEETS ADA  
**CLR OR DK BRZ ANODIZED**

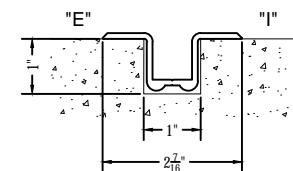
## TOP LOAD ONLY (REQUIRES STRUCTURAL HEADER BY OTHERS) NO TRANSOM BY S.I.



**SURFACE MOUNTED SILL (TOP LOAD ONLY)**  
LIMITED AIR AND WATER  
SIMILAR TO COMMERCIAL DOOR  
NOT HURRICANE CERTIFIED  
**MUST CHOOSE PAINT COLOR**



**SURFACE MOUNTED SILL (TOP LOAD ONLY)**  
LIMITED WATER RESISTANCE SIMILAR  
TO COMMERCIAL DOOR  
MEETS ADA  
NOT HURRICANE CERTIFIED  
**CLR OR DK BRZ ANODIZED**



**RECESSED FLUSH HAT SILL (TOP LOAD ONLY)**  
LIMITED TO NO WATER RESISTANCE  
MEETS ADA  
NOT HURRICANE CERTIFIED  
**CLR OR DK BRZ ANODIZED**

PLEASE NOTE: All recessed sills require a 1 1/2" drain pipe to be located at two points under the sill.  
Locations to be determined and show on shop drawings.

© 2017 Solar Innovations, Inc. - All Rights Reserved. These plans are the property of Solar Innovations, Inc. Any use or reproduction of these plans, in whole or in part, without the written permission of Solar Innovations, Inc. is forbidden.