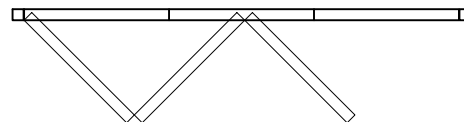


EXTERIOR ELEVATION

NOT TO SCALE

~ SOLAR INNOVATIONS' ALL WALL SYSTEM ~

"INTERIOR"



"EXTERIOR"

PLAN VIEW

NOT TO SCALE

UNIT INFORMATION

FRAMING TYPE: G2 Standard Framing with Iso-bar thermal break

GLAZING SET UP: Opening for $\frac{3}{16}$ " Monolithic Glazing to $1\frac{1}{4}$ " Insulated Glazing, Polycarbonate, or Solid Panel Infill

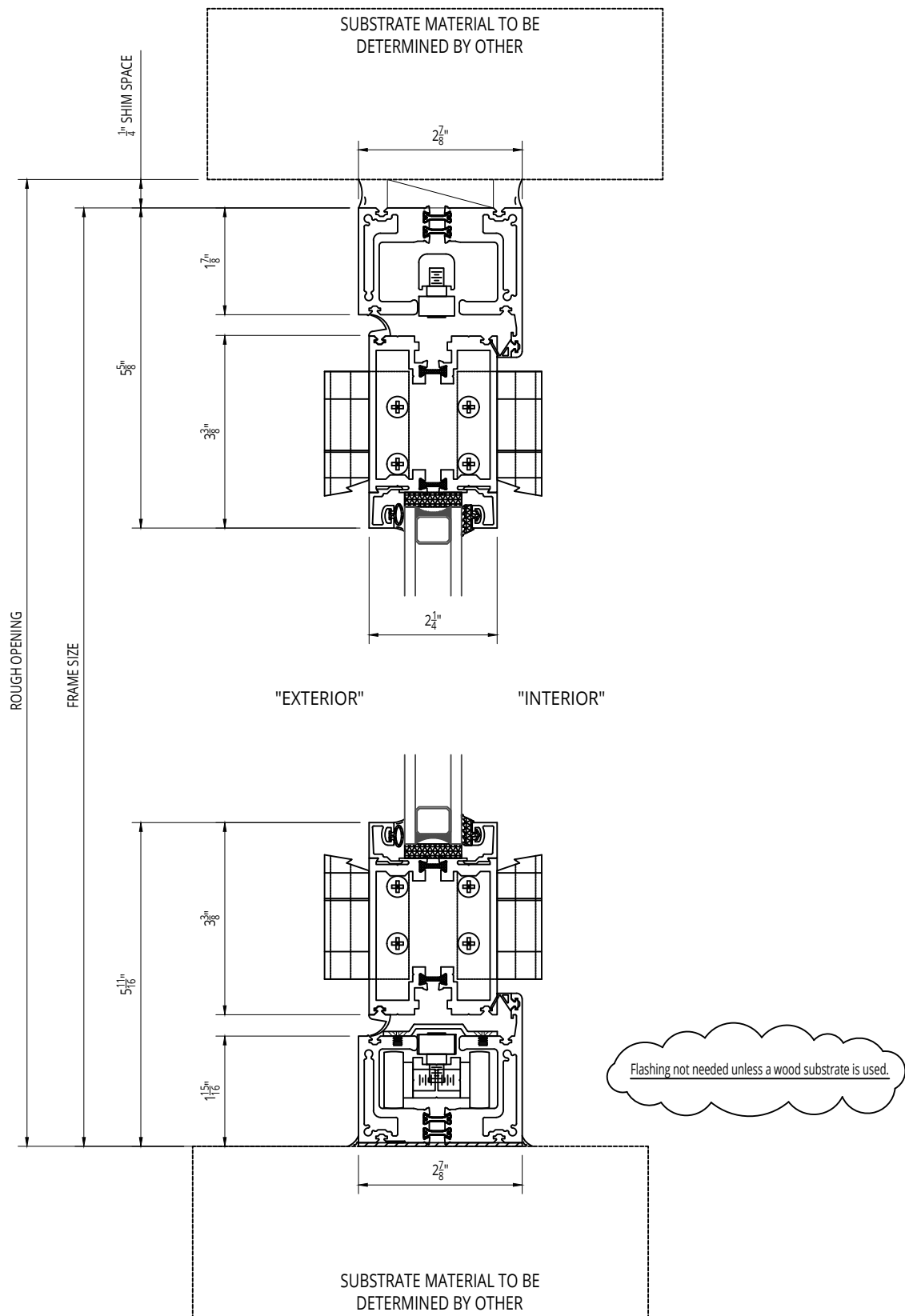
Top or Bottom Weight Bearing

Zero Maintenance Extruded Aluminum Hinges with Stainless Steel Pin

Minimum Horizontal Panel Dimension 18". Smaller Panels may be available upon Engineering Approval

Designed and Manufactured in the U.S.A.

© 2017 Solar Innovations, Inc. - All Rights Reserved. These plans are the property of Solar Innovations, Inc. Any use or reproduction of these plans, in whole or in part, without the written permission of Solar Innovations, Inc. is forbidden.



© 2017 Solar Innovations, Inc. - All Rights Reserved. These plans are the property of Solar Innovations, Inc. Any use or reproduction of these plans, in whole or in part, without the written permission of Solar Innovations, Inc. is forbidden.



SOLAR INNOVATIONS®
WINDOWS & DOORS

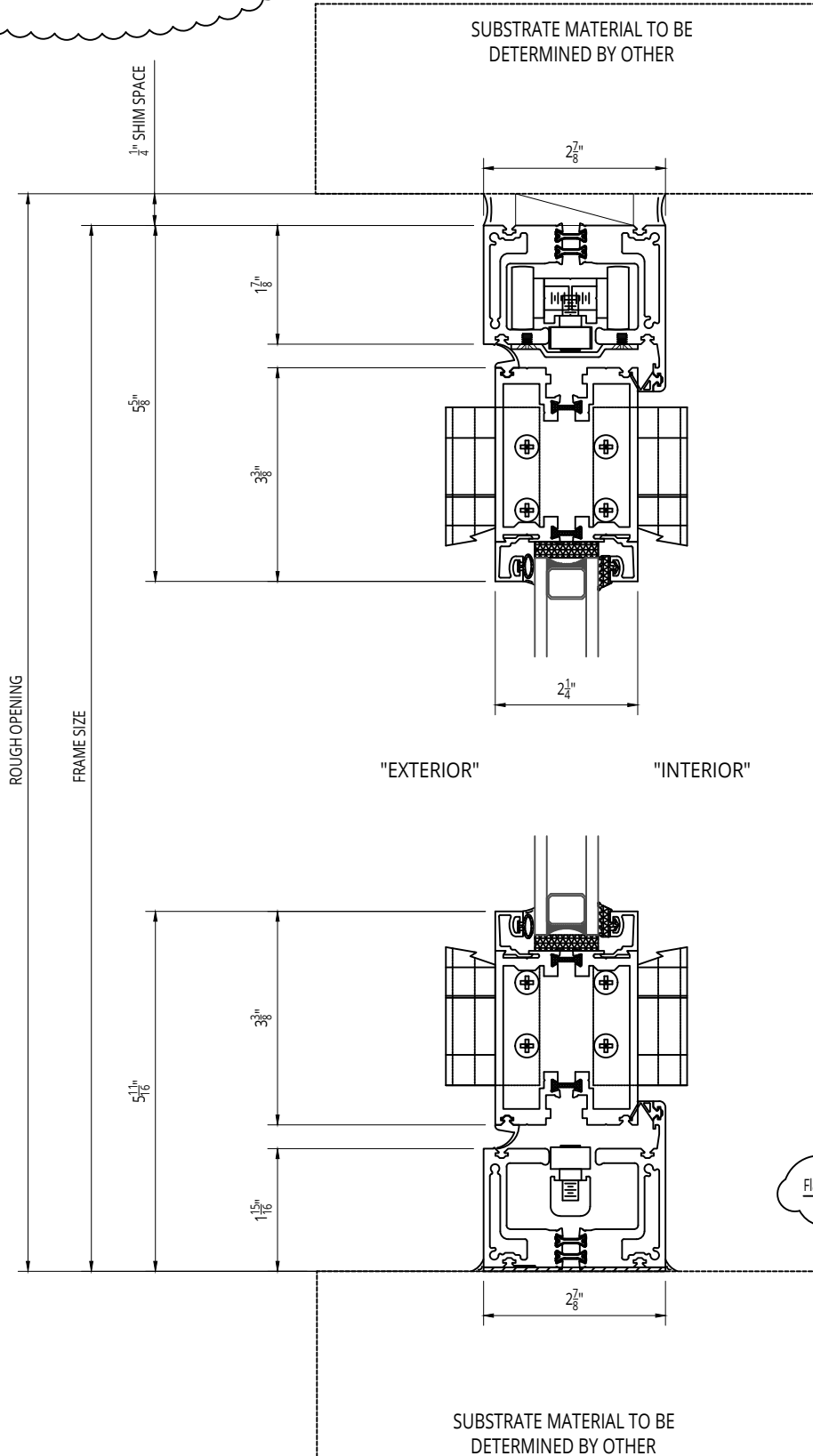
SI3300 G2 Thermally Broken Folding Glass Wall, Outfold, Bottom Load, Standard Dual Wheel Sill - Head and Sill Section

ALL DATA CONTAINED HEREIN IS CONSIDERED COMPANY CONFIDENTIAL INFORMATION AND IS SUBJECT TO OUR CONFIDENTIALITY AGREEMENT AS SET FORTH ON OUR WEBSITE AT <http://www.solarinnovations.com/contact/>

ALL DRAWINGS
ARE VIEWED
FROM THE
EXTERIOR
LOOKING IN.

DRAWING
SCALE:
NOT TO
SCALE

STRUCTURAL HEADER NOTE:
STRUCTURAL HEADER [NOT BY SOLAR INNOVATIONS] REQUIRED TO SUPPORT WEIGHT OF FOLDING GLASS WALL. HEAD DETAIL SHOWN FOR CONCEPTUAL USE ONLY. DESIGN OF HEADER IS NOT THE RESPONSIBILITY OF SOLAR INNOVATIONS.



Flashing not needed unless a wood substrate is used.

© 2017 Solar Innovations, Inc. - All Rights Reserved. These plans are the property of Solar Innovations, Inc. Any use or reproduction of these plans, in whole or in part, without the written permission of Solar Innovations, Inc. is forbidden.



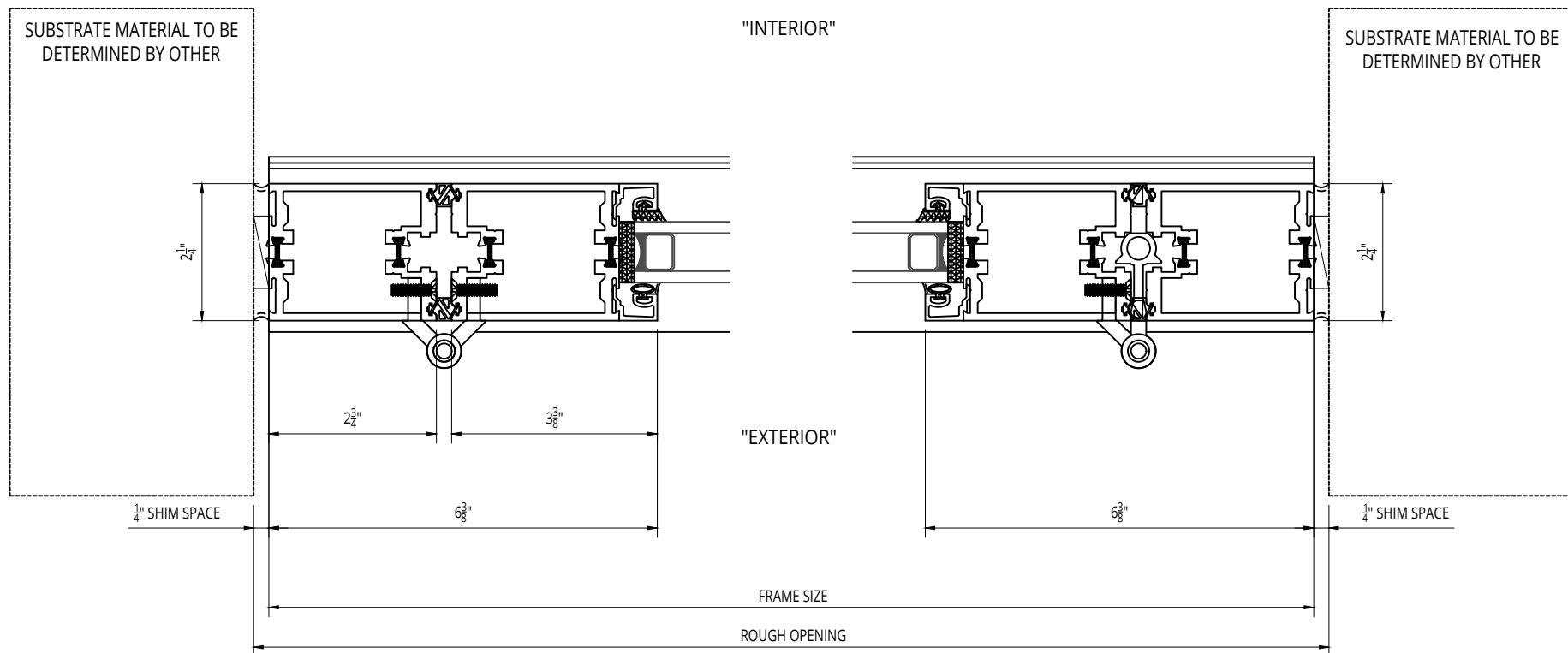
SOLAR INNOVATIONS
WINDOWS & DOORS

SI3300 G2 Thermally Broken Folding Glass Wall, Outfold, Top Load, Standard Dual Wheel Sill - Head and Sill Section

ALL DATA CONTAINED HEREIN IS CONSIDERED COMPANY CONFIDENTIAL INFORMATION AND IS SUBJECT TO OUR CONFIDENTIALITY AGREEMENT AS SET FORTH ON OUR WEBSITE AT <http://www.solarinnovations.com/contact/>

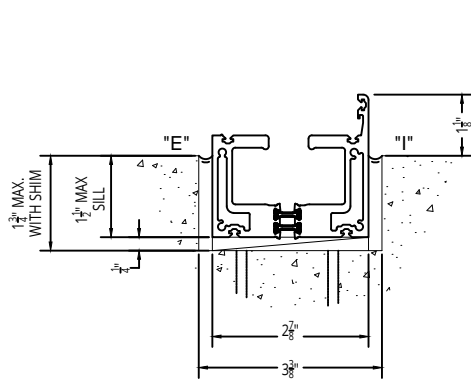
ALL DRAWINGS
ARE VIEWED
FROM THE
EXTERIOR
LOOKING IN.

DRAWING
SCALE:
NOT TO
SCALE

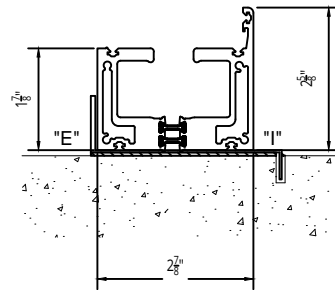


© 2017 Solar Innovations, Inc. - All Rights Reserved. These plans are the property of Solar Innovations, Inc. Any use or reproduction of these plans, in whole or in part, without the written permission of Solar Innovations, Inc. is forbidden.

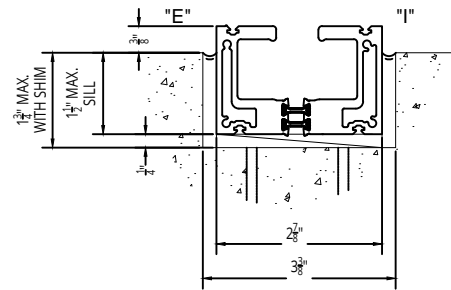
SI3350 G2 FOLDING GLASS WALL SILLS



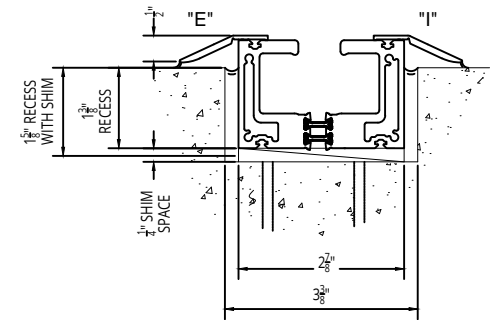
RECESSED STANDARD SILL
12.0 PSF NO LEAKAGE
HURRICANE CERTIFIED
NOT ADA
MUST CHOOSE PAINT COLOR



STANDARD SILL
12.0 PSF NO LEAKAGE
HURRICANE CERTIFIED
NOT ADA
MUST CHOOSE PAINT COLOR



RECESSED FLUSH SILL
LIMITED AIR & WATER PERFORMANCE
SIMILAR TO COMMERCIAL DOOR OR BETTER
BECAUSE OF TANK
HURRICANE CERTIFIED AT 9.0PSF NO LEAKAGE
CLR OR DK BRZ ANODIZED



RECESSED SILL w/ DOUBLE ADJUSTABLE RAMP STOP
LIMITED WATER RESISTANCE SIMILAR
TO COMMERCIAL DOOR
HURRICANE CERTIFIED AT 9.0PSF NO LEAKAGE
MEETS ADA
CLR OR DK BRZ ANODIZED

© 2017 Solar Innovations, Inc. - All Rights Reserved. These plans are the property of Solar Innovations, Inc. Any use or reproduction of these plans, in whole or in part, without the written permission of Solar Innovations, Inc. is forbidden.