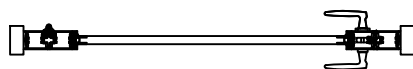


EXTERIOR ELEVATION

NOT TO SCALE

~ SOLAR INNOVATIONS' TERRACE DOOR ~

"INTERIOR"



"EXTERIOR"

PLAN VIEW

NOT TO SCALE

UNIT INFORMATION
FRAMING TYPE: G2 Standard Framing with Iso-bar thermal break
GLAZING SET UP: Opening for $\frac{1}{16}$ " to 1" Insulated Glazing
Zero Maintenance Extruded Aluminum Hinges with Stainless Steel Pin
Designed and Manufactured in the U.S.A.

© 2022 Solar Innovations, Inc. - All Rights Reserved. These plans are the property of Solar Innovations, Inc. Any use or reproduction of these plans, in whole or in part, without the written permission of Solar Innovations, Inc. is forbidden.



SOLAR INNOVATIONS®
WINDOWS & DOORS

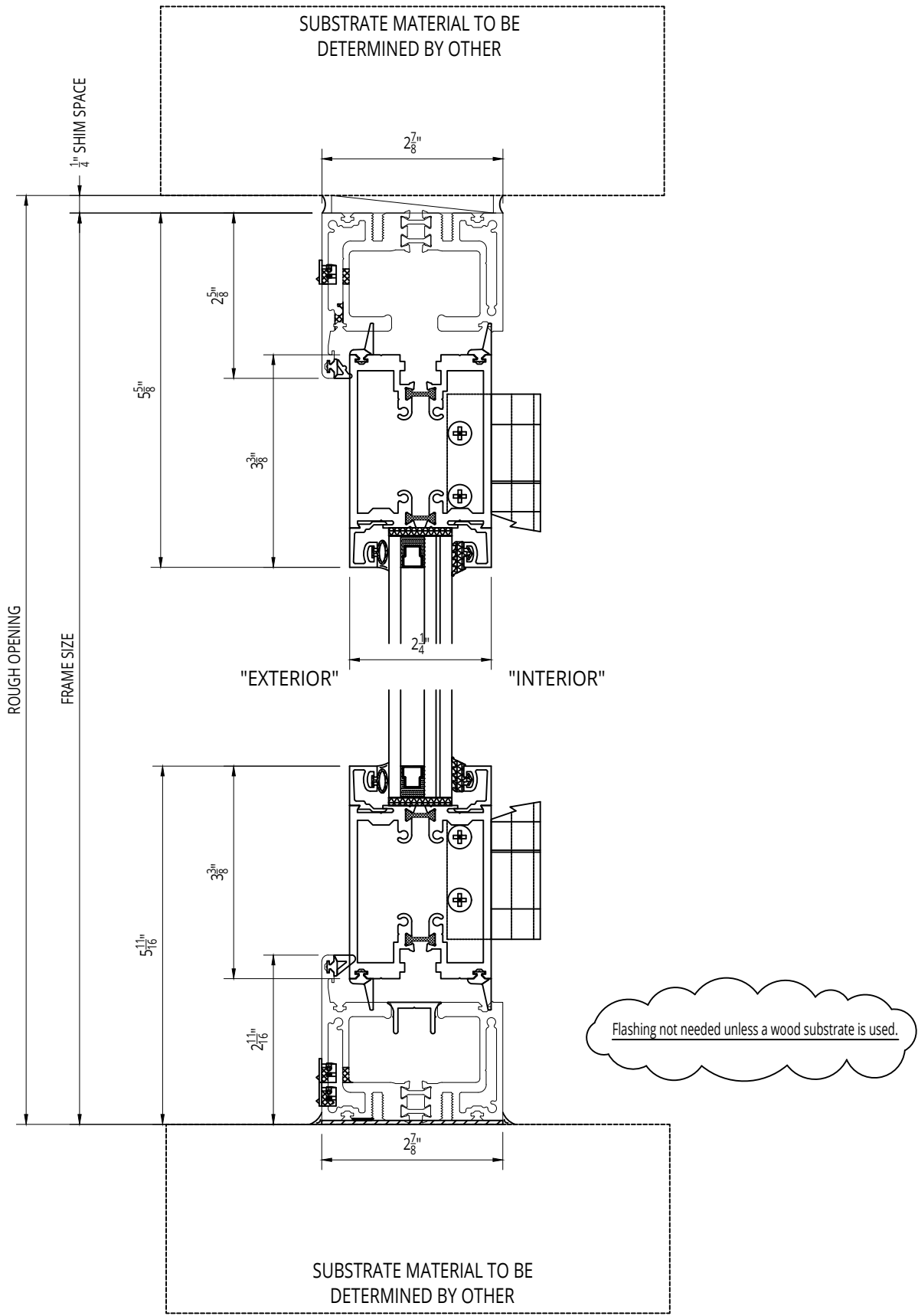
SI2250HP Impact G2 Modular Terrace Door - G2 FGW Framing, Inswing, Standard Dual Wheel Sill

ALL DATA CONTAINED HERE IN IS CONSIDERED COMPANY CONFIDENTIAL INFORMATION AND IS SUBJECT TO OUR CONFIDENTIALITY AGREEMENT AS SET FORTH ON OUR WEBSITE AT <http://www.solarinnovations.com/contact/>

ALL DRAWINGS
ARE VIEWED
FROM THE
EXTERIOR
LOOKING IN.

DRAWING
SCALE:
NOT TO SCALE

© 2022 Solar Innovations® Architectural Glazing Systems - All Rights Reserved. These plans are the property of Solar Innovations® Architectural Glazing Systems. Any use or reproduction of these plans, in whole or in part, without the written permission of Solar Innovations® Architectural Glazing Systems is forbidden.



© 2022 Solar Innovations, Inc. - All Rights Reserved. These plans are the property of Solar Innovations, Inc. Any use or reproduction of these plans, in whole or in part, without the written permission of Solar Innovations, Inc. is forbidden.



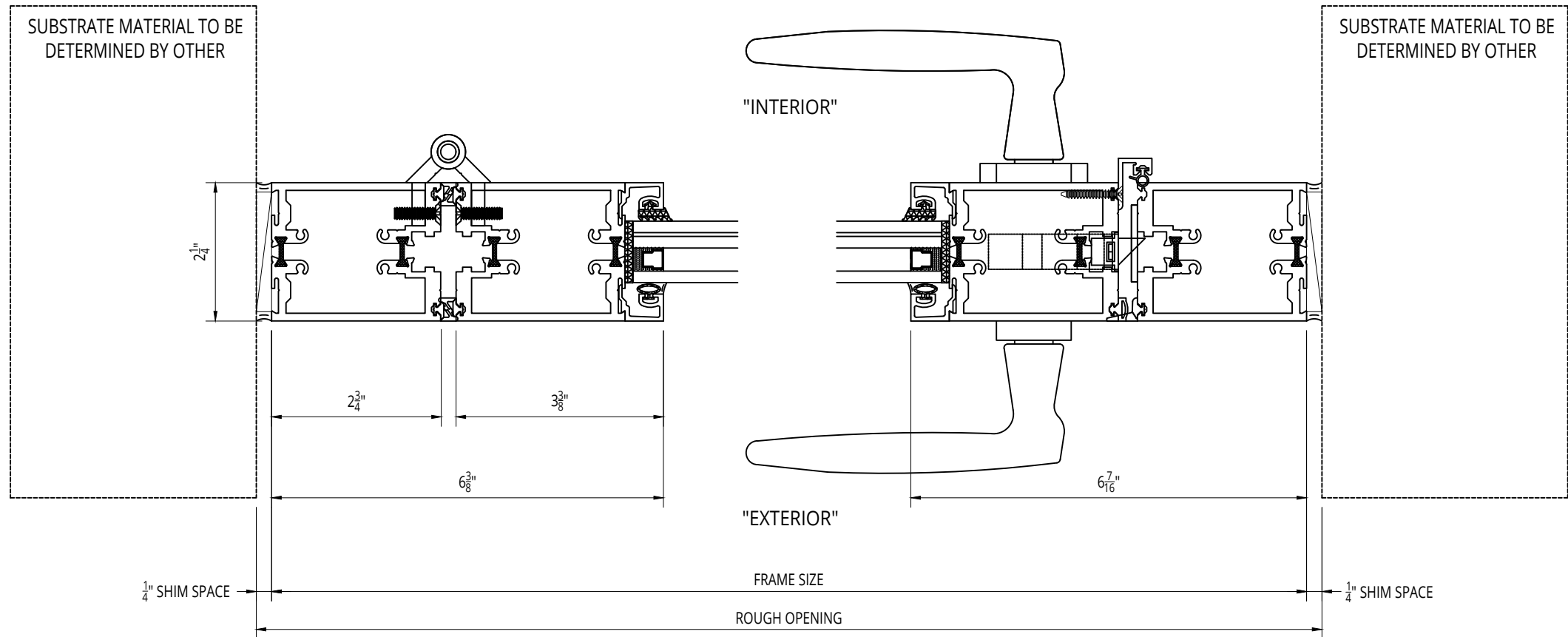
SOLAR INNOVATIONS®
WINDOWS & DOORS

SI2250HP Impact G2 Modular Terrace Door - G2 Folding Glass Wall
Framing, Inswing, Standard Dual Wheel Sill - Head and Sill Section

ALL DATA CONTAINED HERE IN IS CONSIDERED COMPANY CONFIDENTIAL INFORMATION AND IS SUBJECT TO OUR CONFIDENTIALITY AGREEMENT AS SET FORTH ON OUR WEBSITE AT <http://www.solarinnovations.com/contact/>

ALL DRAWINGS
ARE VIEWED
FROM THE
EXTERIOR
LOOKING IN.

DRAWING
SCALE:
NOT TO SCALE



© 2022 Solar Innovations, Inc. - All Rights Reserved. These plans are the property of Solar Innovations, Inc. Any use or reproduction of these plans, in whole or in part, without the written permission of Solar Innovations, Inc. is forbidden.



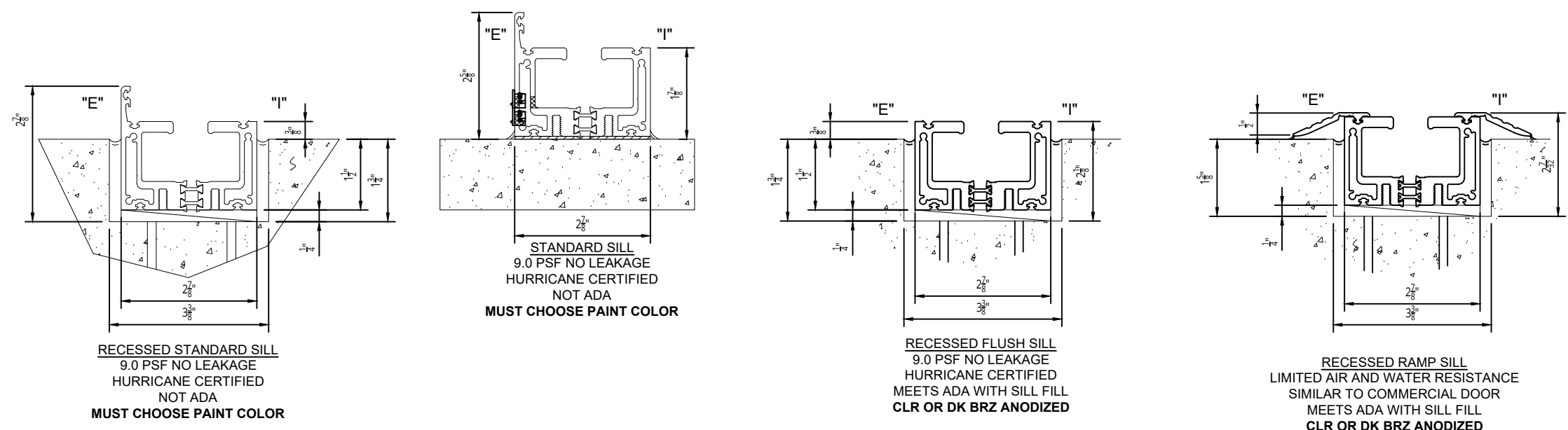
SI2250HP Impact G2 Modular Terrace Door - G2 Folding Glass Wall Framing, Inswing, Standard Dual Wheel Sill - Jamb Details

ALL DATA CONTAINED HERE IN IS CONSIDERED COMPANY CONFIDENTIAL INFORMATION AND IS SUBJECT TO OUR CONFIDENTIALITY AGREEMENT AS SET FORTH ON OUR WEBSITE AT <http://www.solarinnovations.com/contact/>

ALL DRAWINGS
ARE VIEWED
FROM THE
EXTERIOR
LOOKING IN.

DRAWING
SCALE:
NOT TO SCALE

SI2250HP IMPACT INSWING G2 MODULAR TERRACE DOOR SILLS



PLEASE NOTE: All FGW Framing & Sill Options described above should be used where job-specific panel areas and design pressures exceed those used on SI's standard impact rated terrace door products.

PLEASE NOTE: All recessed sills require a 1 1/2" drain pipe to be located at two points under the sill. Locations to be determined and show on shop drawings.

© 2022 Solar Innovations, Inc. - All Rights Reserved. These plans are the property of Solar Innovations, Inc. Any use or reproduction of these plans, in whole or in part, without the written permission of Solar Innovations, Inc. is forbidden.



SOLAR INNOVATIONS®
WINDOWS & DOORS

SI2250 HP Impact G2 Modular Terrace Door - G2 FGW Framing, Inswing - Standard Dual Wheel Sill Options

ALL DATA CONTAINED HERE IN IS CONSIDERED COMPANY CONFIDENTIAL INFORMATION AND IS SUBJECT TO OUR CONFIDENTIALITY AGREEMENT AS SET FORTH ON OUR WEBSITE AT <http://www.solarinnovations.com/contact/>

ALL DRAWINGS
ARE VIEWED
FROM THE
EXTERIOR
LOOKING IN.

DRAWING
SCALE:
NOT TO SCALE